

Phoenix Hydro-X Xtreme Xtractor 50Hz

Superior Water Extraction Tool

Patented Suction Roller Provides Both Suction and Compression

The Phoenix 50Hz Hydro-X Xtractor is the most effective and efficient extraction tool on the market today. The Hydro-X Xtractor's patented Suction Roller provides both suction and compression – forcing water to the surface then sucking the water away, not allowing the water to be reabsorbed back into the carpet and pad. No other extractor today can pull as much water from the carpet and pad as the Hydro-X Xtractor.

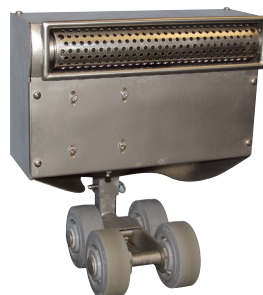
The Hydro-X Xtractor is steerable and self-propelled with variable speeds. One restoration technician can operate the unit and extract a 110 square metre (1200 sq. ft.) structure with carpet and pad in under 2 hours!

Insurance companies recognize the Hydro-X as the best tool on the market and allow for “special extraction tool” rates, sometimes up to three times higher rates per sq. ft. than regular extraction tools.

The Society for Cleaning Restoration Technicians, formerly ISCT, performed a market study of extraction devices at Shaw Industries. The results from that testing can be seen in the published report from www.isct.com. In that independent study of restoration professionals, the Hydro-X Xtractor with the Hydro-X Vac Pac pulled more water out of the carpet and pad than any other product on the market today, in one case pulling 40 gallons (or 320 pints) more water out of the structure than the next best tool.

Industry experts all agree that it is easier to extract water out of a structure than it is through dehumidification and air movement. If you want to cut a DAY(S) off of your drying process, a Hydro-X Xtractor is a necessity.

The Hydro-X Xtreme Xtractor tool can be connected with the Hydro-X Vacuum Pac, and other portable extractors or truckmounts. However, the SCRT W.E.T. Study showed best performance is when combined with the Hydro-X Vacuum Pac.



*Xtreme Xtractor
patented
suction roller*



Patents:

6,152,151

6,629,333

**Xactimate Code:
WTREXTW**

Features

- Patented suction roller
- Self-propelled with positive chain drive – no belts to break or adjust
- Variable speed for every carpet and pad condition
- Extracts in both forward and reverse
- Rust and corrosion resistant stainless steel construction
- Built to withstand daily use
- Heavy duty electricals
- One year warranty on parts and labor



MADISON, WISCONSIN

www.UsePhoenix.com

www.FaceBook.com/UsePhoenix

[www.YouTube.com/user/Use Phoenix](http://www.YouTube.com/user/UsePhoenix)

Let's Be Friends



View Our Videos



Connect with Us



Phoenix 50 Hz Hydro-X Xtreme Xtractor

Specifications

Part No.	4030930
Power	1.2 amps; 240 VAC grounded, 50 hz
Speed	0 - 28 Feet/Minute (Adjustable) Either forward or reverse
Drive Motor	1.0 Amps
Fuse	2.5 Amp 250 VAC
Warranty	One year; 100% Parts and Labor

Dimensions

	Machine	Shipping
Width	43cm (17") (Base)	70cm (27-1/2")
Height	132cm (52")	116cm (45-1/2")
Depth	52cm (20.5") (Base)	56cm (22")
Weight	154kg (70 lbs)	176kg (80 lbs)

Popular Accessories And Replacement Filters

4025734	Hydro-X Caddy
4025369	Hydro-X Suction Chamber Cover Kit
4025601	Hydro-X Vac Pac

Patents:

6,152,151

6,629,333

Xtreme Xtractor
with Hydro-X
Vacuum Pac



The patented Hydro-X Xtreme Xtractor has been designed to pull more water from carpet and pad than any other extraction tool on the market today.

Not all Carpet and Pad configurations are the same.

Every specific combination of carpet and pad will require the restorer to check and determine how many passes the Hydro-X must make to dry the floor. One structure could have multiple different carpet/pad configurations; thus the restorer will have to check each one to determine the proper amount of passes.

Note: The Xtractor is to be used for ONLY carpet and pad. Running on hard surfaces (like glue-down carpet) will not allow for a proper vacuum seal and could damage the perforated roller.

Determining a plan to dry with the Xtreme Xtractor.

Observe the type of carpet and pad installed.

Next, run the Hydro-X Xtreme Xtractor about 2-3 feet into the corner and back out (making 2 passes over the wet floor). Pull back the carpet in the corner, then pull back the pad. Squeeze the pad to determine if water leaks from your fist. If no water drips, then that is the amount of passes needed to dry this particular carpet and pad combination. If water drips from your hand after grabbing the pad, then continue running the Hydro-X into the corner until the correct amount of passes is determined to dry the floor.

Note: The speed dial on the Hydro-X can be turned up to help reduce the amount of time it takes to complete the drying process. The speed has a direct effect on the amount of water extracted in one pass. Historically, fast speed is appropriate for easy extraction type carpets and pad, such as cut-pile, and slow speed is appropriate for hard extraction type carpets and pad, such as berbers.

