

Setting Up Your DryTAG RH

1. Using the two screws near the battery pull tab using a Phillips #1.
2. Remove the battery pull tab and discard.
3. Tighten the two screws.
4. Follow instructions on TS- 1131 to add the DryTAG RH to DryLINK.
5. After installation onto equipment (see below), check that equipment shows as “on” within DryLINK.

Installing Onto Equipment

General

The DryTAG RH can be mounted with cable ties or screws. We recommend using cable ties.

DRYTAG RH MOUNTING INSTRUCTIONS

Mounting DryTAG RH on a Phoenix 200HT, 250 MAX, 270 HTx and 300 MAX

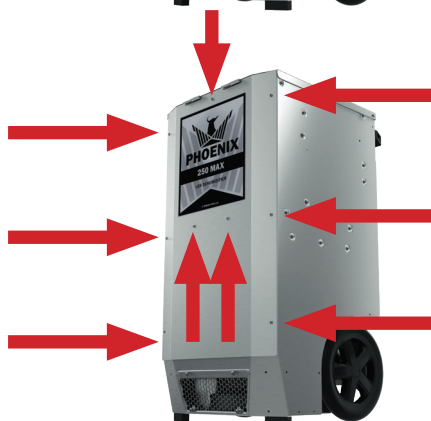
STEP 1



MOUNTING INSTRUCTIONS

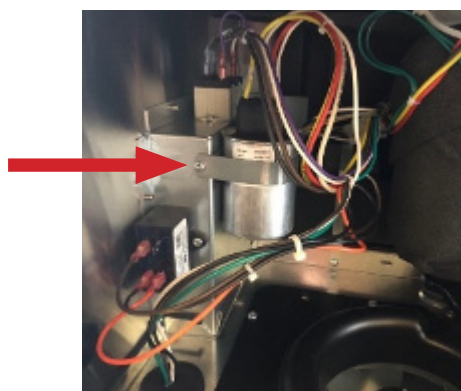
Ensure the dehumidifier is unplugged.

2



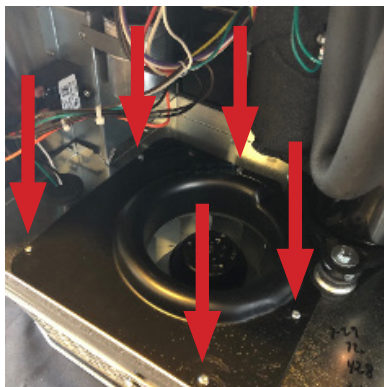
First start by removing the front cover from the dehumidifier by removing the nine screws, using a T25 Torx screwdriver.

3



With the front cover removed, locate and remove the screw attaching the P-Clamp for the capacitor using a T20 Torx screwdriver.

4



With the capacitor out of the way, remove the five screws attaching the inlet ring using a T25 Torx screwdriver.



DRYTAG RH MOUNTING INSTRUCTIONS

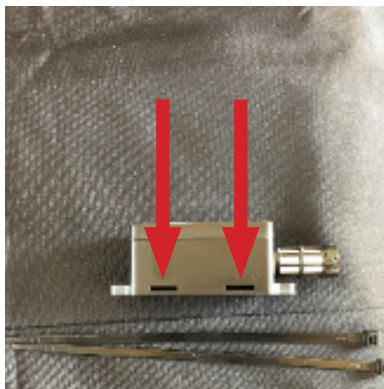
Mounting DryTAG RH on a Phoenix 200HT, 250 MAX, 270 HTx and 300 MAX

STEP

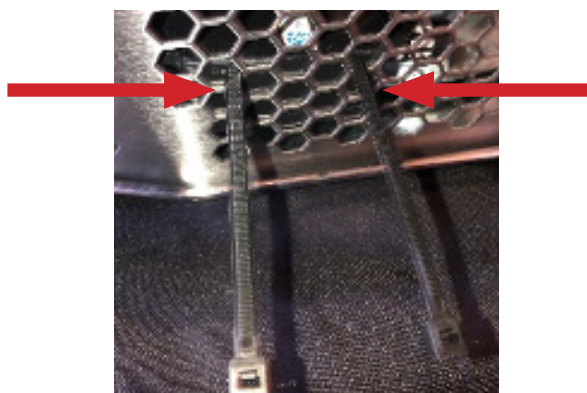
5



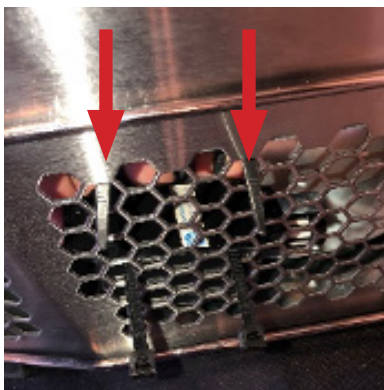
5a



5b



5c



MOUNTING INSTRUCTIONS

With the inlet ring removed, attach the DryTAG RH sensor to the exhaust grill of the dehumidifier.

Notice the DryTAG RH sensor has two slots, this is where the nylon zip ties pass through.

While holding the DryTAG RH sensor on its side against the inside of the exhaust grill, pass two zip ties through the openings of the exhaust grill and through the slots in the DryTAG RH sensor.

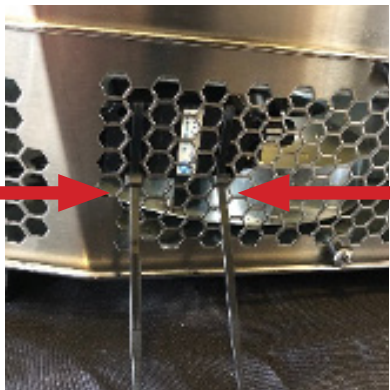
With the zip ties through the grill and sensor, lay the DryTAG RH sensor flat against the exhaust grill and pass the two zip ties back through the exhaust grill.



DRYTAG RH MOUNTING INSTRUCTIONS

Mounting DryTAG RH on a Phoenix 200HT, 250 MAX, 270 HTx and 300 MAX

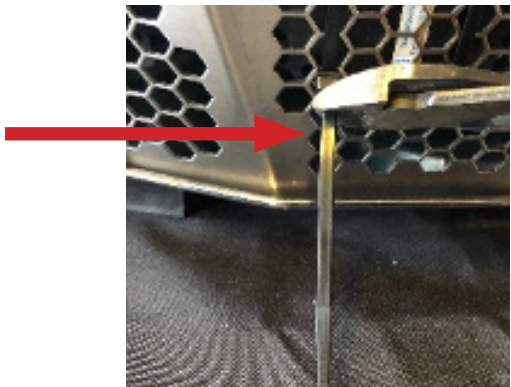
STEP 5d



MOUNTING INSTRUCTIONS

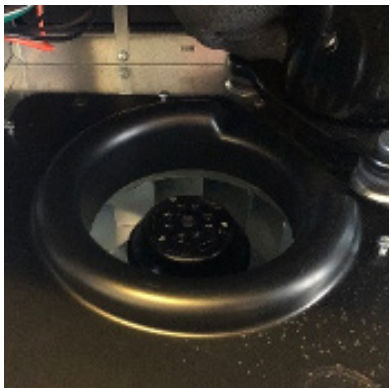
While holding the DryTAG RH sensor against the exhaust grill, secure both zip ties.

5e



Once the zip ties are secure, trim the excess off with a pair of side cutters.

6



Re-install the inlet ring.

7



Re-install the capacitor.



DRYTAG RH MOUNTING INSTRUCTIONS

Mounting DryTAG RH on a Phoenix 200HT, 250 MAX, 270 HTx and 300 MAX

STEP
8



MOUNTING INSTRUCTIONS

Re-install the front cover.



PHOENIX

USEPHOENIX.COM | 800-533-7533

