



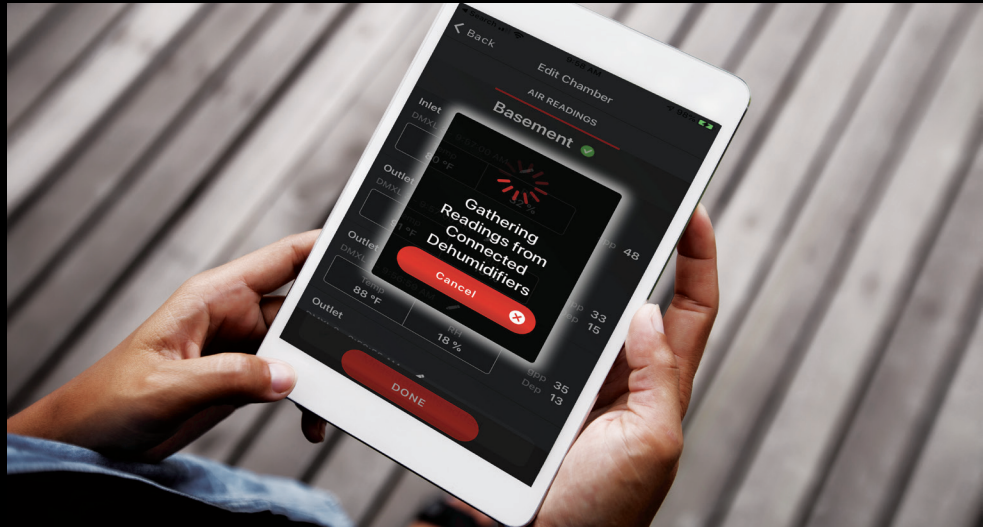
PRODUCT CATALOG

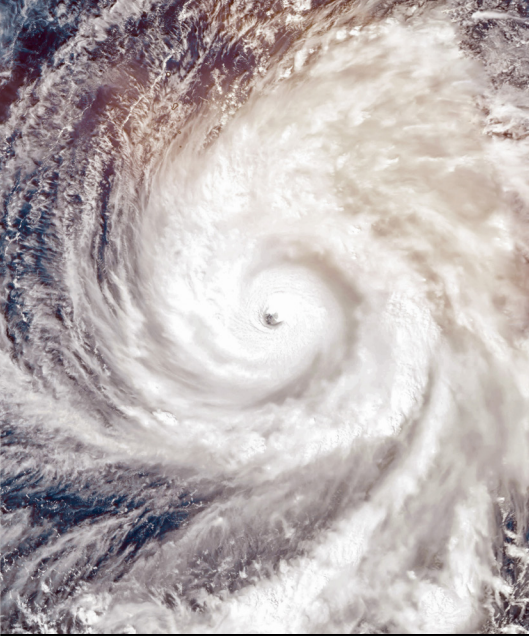


**DRY FAST.
DRY SMART.
DRY PROFITABLE.**

USEPHOENIX.COM ■ 1-800-533-7533

DURABILITY THAT WEATHERS THE STORM.





For 25 years, Phoenix has been redefining Restoration Equipment. Every product is designed to create the most complete product offering for every drying scenario.

**Our goal is to make
your project simpler.
And more profitable.**



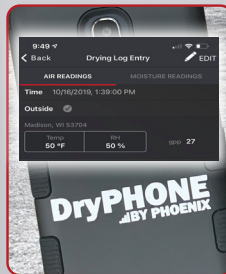
DryLINK App

SCHEDULE SMARTER.

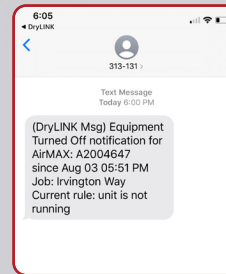
The **PHOENIX DRYLINK APP** allows you to save time, save labor, take readings remotely, receive jobsite alerts, and track your equipment. Share drying reports with your team, customer, or the insurance agency via text or email.



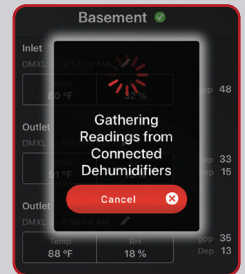
MONITOR



Take atmospheric and moisture content readings remotely.



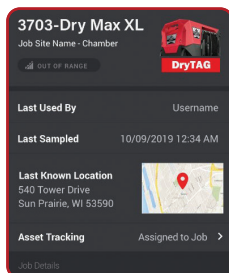
Receive alerts including when equipment is turned off.



Gather readings instantly from all Bluetooth equipment in range.



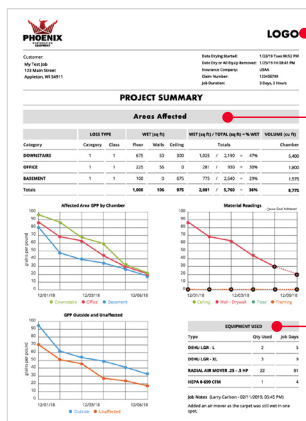
TRACK



Track all of your smart equipment using last known location.



REPORT



- Drying report link is updated in real-time
- Equipment serial numbers and usage automatically added
- Automate all air and moisture content readings
- Customize with your company's logo
- Allows for non-smart equipment readings



All units available in blue.

DryLINK Enabled Equipment

PART NUMBERS: DryMAX XL Pro 4043000 (Blue 4043060), DryMAX BLE 4038500 (Blue 4038550), DryMAX XL 4037000 (Blue 4037060), AirMAX BLE 4038310 (Blue 4038320)

Our DryMAX XL Pro, DryMAX BLE, DryMAX XL and AirMAX BLE are available with Bluetooth technology allowing you to automatically connect these units to DryLINK.

Update your existing DryMAX with our Bluetooth upgrade kit. **PART NUMBER:** 4041595



DryTAG

PART NUMBER: 4041835

Turn your entire fleet into Smart Equipment with DryTAG. This battery-powered Bluetooth beacon works with any brand of equipment to provide last known location and hours of operation. Paired with DryPHONE, this beacon can send alerts if equipment loses power or is turned off.*

* DryTAG does not provide Temperature and RH data.



DryTAG RH

PART NUMBER: 4041915

Mount the DryTAG RH, a Bluetooth Temp/RH Sensor, directly to the inside of the outlet grill of your dehumidifier to start measuring temperature and relative humidity (RH). Automated psychrometric data is then streamed automatically to the DryLINK app and drying report. The DryTAG RH can also be used as a standalone thermo-hygrometer to automate the unaffected area, affected area, HVAC, or outside conditions.



DryPHONE

PART NUMBER: 4041845

DryPHONE offers access-from-anywhere convenience to DryLINK enabled equipment. This inexpensive option provides a number of benefits including the ability to send alerts when equipment is turned off or when a goal has been reached.

This inexpensive option provides a number of benefits including, remote monitoring and jobsite alerts.

DryLINK Residential Kit - Get started with 16 DryTAG's, 6 DryTAG RH's, and 4 DrySENSE for one special price -

PART NUMBER: 4042385

Xactimate Remote Monitoring Codes with DryPHONE (Gateway):

WTRRM Remote Monitoring with up to 10 sensors: \$50/day*

WTRRMG Remote Monitoring - additional gateway: \$30/day*

WTRRMS Remote Monitoring - additional sensor (each): \$3/day*

DrySENSE

PART NUMBER: 4042055

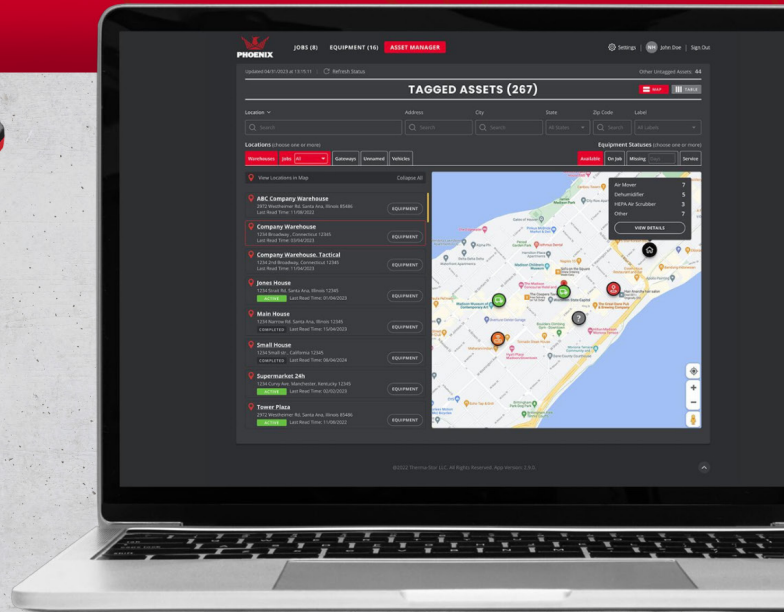
The Phoenix DrySENSE is a Bluetooth moisture content sensor for setting and monitoring moisture goals on the job site. Moisture content readings are automatically added to the drying report and log the time when the drying goal is reached. The attached pins allow you to push the sensor into wet drywall and the included accessory gives you the ability to put stainless screws into harder surfaces to measure the moisture content.



USEPHOENIX.COM ■ **PHOENIX**

DryLINK Asset Manager

TOTAL EQUIPMENT INSIGHT.



We knew our restoration customers had several key problems, so we set out to solve them with DryLINK, our revolutionary Bluetooth-enabled ecosystem. But why stop there? That's why we created **DryLINK Asset Manager**, the ultimate, automated solution for contractors seeking efficient inventory management. With advanced Bluetooth beacons and specially designed gateways, DryLINK Asset Manager effortlessly tracks equipment in warehouses, vehicles, semi- trailers, and job sites. Below are a few things you will need to get started:

DryTAG AM

PART NUMBER: 4043765

DryTAG AM is a new, small, low-cost asset tracking beacon which can be added to any brand of equipment and used with DryLINK Asset Manager. This new tag can also be used in DryLINK but it will not allow the user to know if equipment is turned off when doing remote monitoring. DryTAG AM is sold in packs of 20.

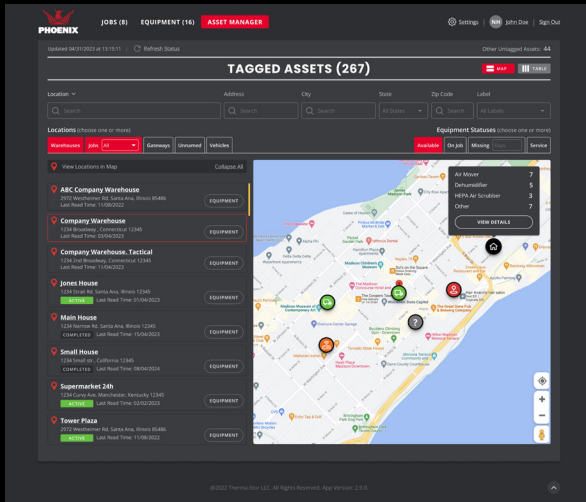


DryLINK Mobile Gateway

PART NUMBER: 4042615

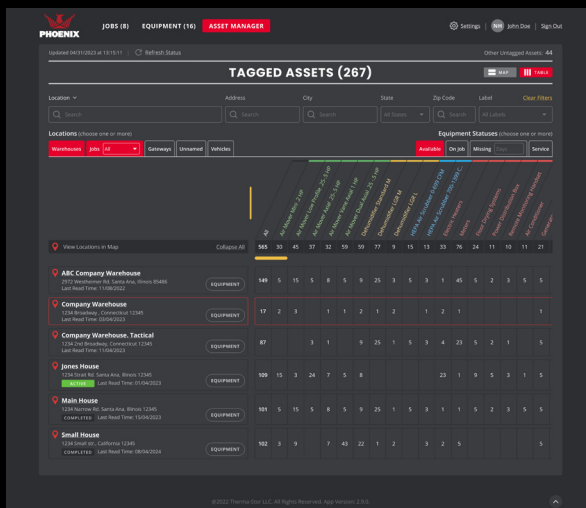
For Asset Manager to function correctly, ensure every equipment-storage site has a gateway. All dehumidifiers, including DryMAX XL and DryMAX BLE, need a DryTAG. For non-Smart dehumidifiers, install a DryTAG RH to use DryLINK for jobs. Any tracked equipment requires a DryTAG or DryTAG RH. The DryLINK Asset Manager Gateway, with three 3-year batteries, transmits even when vehicles are off and can be used in storage warehouses and temporary locations.





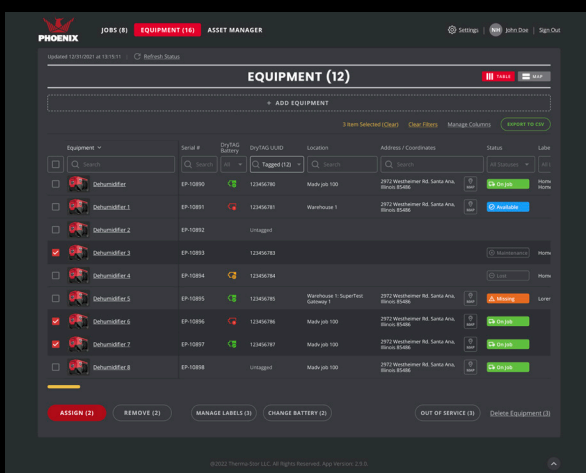
TAGGED ASSETS - Map View

- ▶ At a glance view of vehicles, warehouses, jobs, and their associated equipment
- ▶ Vehicle locations updated every five minutes
- ▶ Quickly toggle from location to location by clicking on the cards
- ▶ Filter on locations and equipment statuses



TAGGED ASSETS - Table View

- ▶ Equipment summarized by location and Xactimate category
- ▶ Add custom columns
- ▶ Manage your individual column view
- ▶ Export to CSV
- ▶ Easily toggle to Map or Table View
- ▶ Filter on locations and equipment statuses



ADVANCED EQUIPMENT VIEW

- ▶ Last read time & last user
- ▶ Search By – Equipment name, serial number, location, address/coordinates, last job name, model, type, size, manufacturer
- ▶ Selectable Filters – General Type: air mover, dehumidifier, air scrubber and other
- ▶ DryTAG UUID – Filter by untagged and tagged equipment, our statuses include available, inactive, on job and missing



DRYMAX XL PRO

PART NUMBER: 4043000

CAPACITY: 140 PINTS/DAY @ 80F/60%RH

CURRENT: 7.4 AMPS

AIRFLOW: 300 CFM

SIZE: 20"W X 18"H X 25.4"D, 85 LBS.

XACTIMATE CATEGORY: XL

XACTIMATE CODE: WTRDHM>>

RATE/DAY: \$114.72*

► Unique two-position handle for maneuvering: 42" position for flat ground, 50" position for easier transport on stairs compared to upright dehumidifiers

► Built in Bluetooth - data logging of temperature/relative humidity inlet and outlet

► Add two AA batteries for built-in connection to DryLINK Asset Manager (no tag needed)



► Optional blue rotomold cabinet (PN 4043060)

Extended handle can dolly and lock in AirMAX and Focus II air movers

Two-position handle for transport and stairs

12" wheels for easy transport on stairs

Onboard USB for remote monitoring

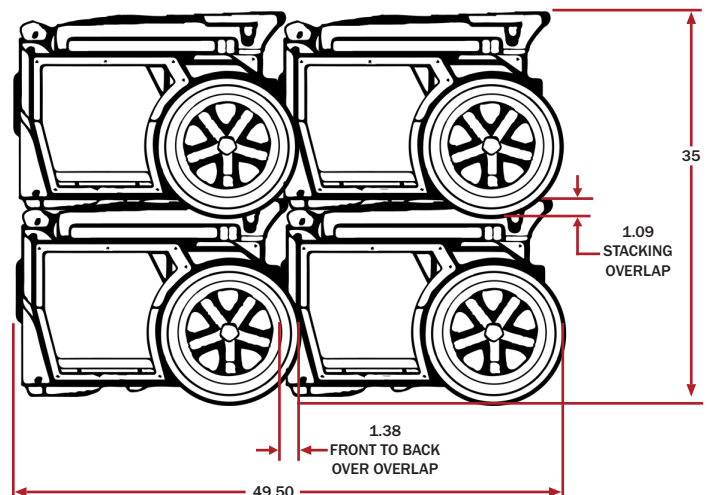
Lockable cover to secure DryPHONE

'Push' button for handle extension



Superior stacking for space savings (up to 3)

Nesting for space savings



DRYMAX BLE

PART NUMBER: 4038500

CAPACITY: 80 PINTS/DAY @ 80F/60%RH

CURRENT: 5.7 AMPS

AIRFLOW: 170 CFM

SIZE: 12"W X 17.5"H X 21"D, 63 LBS.

XACTIMATE CATEGORY: L

XACTIMATE CODE: WTRDHM>

RATE/DAY: \$73.13*

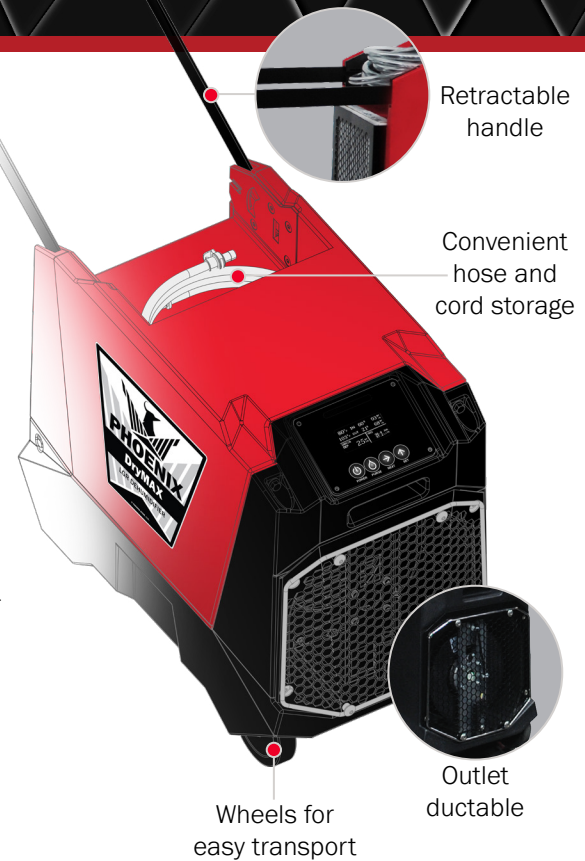


▶ Superior stacking

Optional blue rotomold cabinet (PN 4038550)



- ▶ Built-in Bluetooth technology with data logging and instant readings
- ▶ Phoenix DryLINK mobile app (iOS and Android compatible)
- ▶ Three-year warranty on new style condensate pump
- ▶ Industry-leading graphical control panel
- ▶ Superior stacking
- ▶ Easy access for service
- ▶ On-board storage for 25' power cord and 33' condensate hose
- ▶ 80 PINTS/DAY @ 80F/60%RH
- ▶ Optional Bluetooth Upgrade Kit for existing DryMAX units (PN 4041595)



R250

PART NUMBER: 4043400

CAPACITY: 135PINTS/DAY @ 80F/60%RH

CURRENT: 8.3 Amps

AIRFLOW: 310 CFM

SIZE: 20"W x 33.5"H x 20"D, 109 lbs.

XACTIMATE CATEGORY: XL

XACTIMATE CODE: WTRDHM>>

RATE/DAY: \$114.72*

- ▶ XL category, 135 pints/day
- ▶ Vertical, retractable handle and inset wheels allowing for easy transport
- ▶ Ducting options for flexible drying configurations
- ▶ Convenient cord and hose storage
- ▶ Lightweight, durable rotomold cabinet
- ▶ Stackable design for easy storage



DRYMAX XL

PART NUMBER: 4037000

CAPACITY: 125 PINTS/DAY @ 80F/60%RH

CURRENT: 7.7 AMPS

AIRFLOW: 300 CFM

SIZE: 16"W X 17.5"H X 24"D, 88 LBS.

XACTIMATE CATEGORY: XL

XACTIMATE CODE: WTRDHM>>

RATE/DAY: \$114.72*

- ▶ Ultra compact design with XL performance
- ▶ Superior stacking capability
- ▶ Patented five-coil design with auto adjusting fan speed for maximum LGR performance
- ▶ Bluetooth enabled to integrate with Free DryLINK app
- ▶ Easy access for filter replacement and service



▶ Optional blue rotomold cabinet (PN 4037060)

State-of-the-art graphical control panel

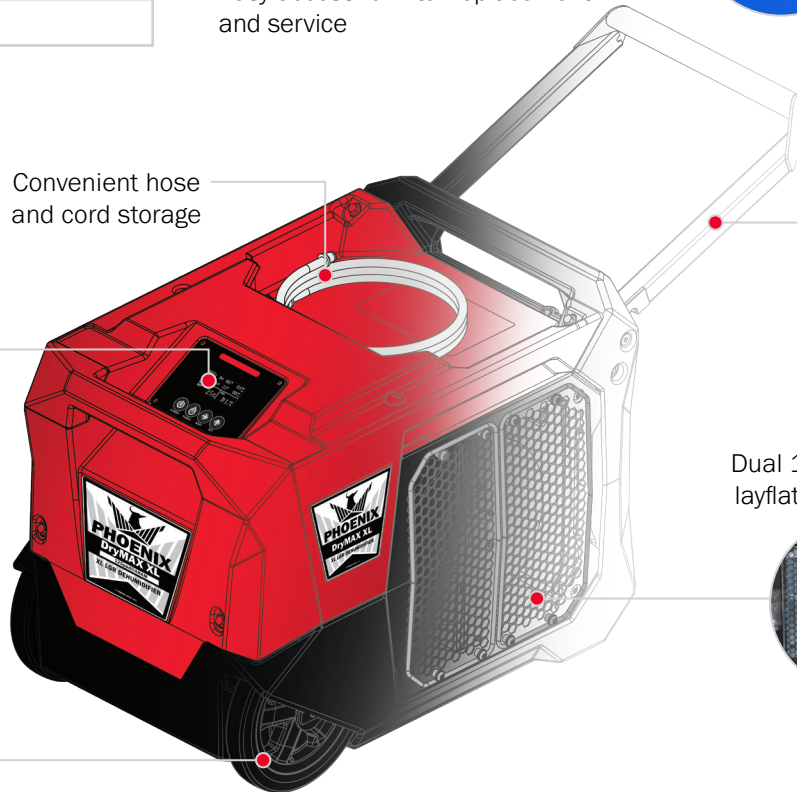


Convenient hose and cord storage

Integrated fold-down handle

Dual 10" or single 14" layflat ducting options

Wheels for easy transport



250 MAX

PART NUMBER: 4030010

CAPACITY: 145 PINTS/DAY @ 80F/60%RH

CURRENT: 7.4 Amps

AIRFLOW: 365 CFM

SIZE: 20"W x 40"H x 23"D, 119 lbs.

XACTIMATE CATEGORY: XL

XACTIMATE CODE: WTRDHM>>

RATE/DAY: \$114.72*

- ▶ Most energy efficient LGR
- ▶ Operates up to 125 °F
- ▶ Fixed high-temp, ByPass™ technology
- ▶ Outperforms competitors at all temperature conditions without needing adjustments on the job
- ▶ Stainless cabinet provides sleek and protective covering



Patented **ByPass™** TECHNOLOGY

▶ Powerful, downward focused exhaust

DESICCANT DEHUMIDIFIERS

D385

PART NUMBER: 4026700
CAPACITY: 130 PINTS/DAY @ 80F/60%RH
CURRENT: 24 Amps
AIRFLOW: 385 CFM (75 Reactivation Airflow)
SIZE: 24.25"W x 40"H x 21.375"D, 105 lbs.
VOLTS: 115
XACTIMATE CODE: WTRDHMD
RATE/DAY: \$230.00*

- ▶ Wide operating range allows for water removal regardless of climate conditions
- ▶ Operates on two separate 115V circuits
- ▶ High-capacity performance
- ▶ Portability allows for easy transport and set up
- ▶ Stainless cabinet provides sleek and protective covering
- ▶ Fits inside most crawl spaces

- ▶ Powerful air flow and durable wheels



ELECTRIC HEAT DRYING SYSTEMS

FIREBIRD COMPACT 20

PART NUMBER: 4033450
BTUS: 20,000 Max (5,000 BTUs/Circuit)
AMPS: (1)-(4) 12 Amp Circuits
AIRFLOW: 250 CFM
SIZE: 13"W x 12.5"H x 26"D, 35 lbs.
FILTER: MERV-11
XACTIMATE CODE: WTRHTAM
RATE/DAY: \$180.00*

Note: Cords are not included with this unit.

- ▶ ETL listed to UL/CSA standards
- ▶ Powerful heat in a lightweight, compact and portable footprint
- ▶ Start up delay prevents sparking
- ▶ Sensors disable heating elements if blocked airflow or overheating conditions are detected
- ▶ Constructed of double walled enclosures to ensure external surfaces are safe to touch
- ▶ Remote thermostat to control heat from anywhere in drying space



- ▶ Multiple heating and ducting options
- ▶ High-efficiency MERV-11 filtration



Phoenix FireBIRD Compact 20 is tested for the highest safety standards. Our FireBIRD Compact 20 features:

- ▶ ETL listed to UL/CSA standards.
- ▶ Startup delay to prevent potentially dangerous arcing/sparking on startup.
- ▶ All heating elements are shielded in a double-wall enclosure.



FOCUS II

PART NUMBER: 4042250-01

CURRENT: 1.1 AMPS

AIRFLOW: 1025 CFM

SIZE: 17.25"W X 20"H X 19.4"D, 27 lbs.

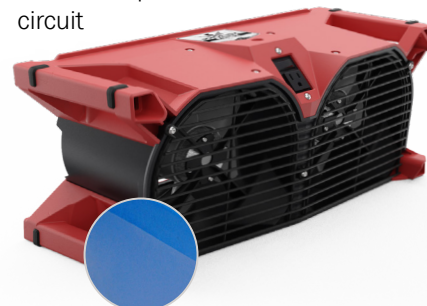
CIRCUIT: 15A GFCI Duplex Receptacle

XACTIMATE CODE: WTRDRY

RATE/DAY: \$25.39*

- ▶ Dual fans optimized to direct airflow toward problematic corners
- ▶ Multiple orientations for symmetrical setup
- ▶ Superior stacking ability: bookshelf storage or transport stacking
- ▶ Remote monitoring capabilities (with DryTAG and DryPHONE accessories)
- ▶ Weighing only 16 lbs, two units can be carried in one hand

- ▶ Daisy chain up to 10 on one 15 Amp circuit



- ▶ Optional blue rotomold cabinet (PN 4042250-02)



- ▶ Dual Cord Wrap Options with Integrated Plug Lock



AIRMAX & AIRMAX BLE

PART NUMBER: 4035000-1 (AirMAX)

PART NUMBER: 4038310 (AirMAX BLE)

CURRENT: 1.9 Amps

AIRFLOW: 925 CFM

SIZE: 17"W x 8.875"H x 20.5"D, 21 lbs.

CIRCUIT: 15A GFCI Duplex Receptacle

XACTIMATE CODE: WTRDRY

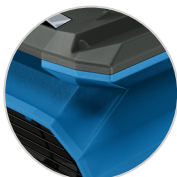
RATE/DAY: \$25.39*

- ▶ Low-profile, compact footprint
- ▶ Easy winding cord and integrated handle for maximum portability
- ▶ Optimized outlet shape delivers high velocity air
- ▶ Stability in all 4 drying positions provides flexibility and safety
- ▶ Convenient GFCI receptacle provides protection

- ▶ Nesting design provides superior stacking capability



- ▶ Bluetooth compatible version available, order AirMAX BLE



- ▶ Optional blue rotomold cabinet (PN 4035060-1 BLE PN 4038320)



GUARDIAN R

PART NUMBER: 4031350-1

FILTRATION: HEPA

CURRENT: 2.4 Amps

AIRFLOW: 250-500 CFM

SIZE: 22"W x 14"H x 24"D, 33 lbs.

XACTIMATE CODE: WTRNAFAN

RATE/DAY: \$70.00*

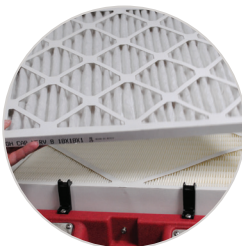
- ▶ Stackability for compact storage



- ▶ The most compact, portable True HEPA air filtration device made
- ▶ Two-stage filtration design with optional carbon filter
- ▶ High energy efficiency
- ▶ Durable, lightweight and stackable rotomold design
- ▶ High performance and portability
- ▶ Variable speed airflow
- ▶ Onboard duplex GFCI and circuit breaker



- ▶ Optional blue rotomold cabinet (PN 4031460-1)



Pleated pre-filter and HEPA filtration captures all removable particles



Small footprint and tough rotomold cabinet



Multiple ducting options for inlet and outlet



FOR DEHUMIDIFICATION EQUIPMENT

STEP 1: Determine the cubic feet of the affected area.

Cubic Feet of affected area = (width) x (length) x (height) or (square footage of affected area) x (height of ceiling).

STEP 2: Determine the class of water damage.

CLASS 1: Slow Rate of Evaporation – (least amount of water absorption and evaporation load): Water intrusion where low porosity materials (e.g., hard surface flooring, plaster, concrete) or medium porosity materials (e.g., structural framing, wood substrates) have absorbed minimal moisture; less than 5% of the combined floor, wall and ceiling surface area in the space is wet, highly porous material (e.g., carpet, gypsum wallboard).

CLASS 2: Fast Rate of Evaporation – (significant amount of water absorption and evaporation load): Water intrusion where wet, highly porous materials (e.g., carpet, gypsum wallboard) represent more than 5%, but less than 40% of the combined floor, wall and ceiling surface area in the space.

CLASS 3: Fastest Rate of Evaporation – (greatest amount of water absorption and evaporation load): Water intrusion where wet, highly porous materials (e.g., carpet, gypsum wallboard) represent more than 40% of the combined floor, wall and ceiling surface area in the space.

CLASS 4: Specialty Drying Situations – (deeply held or bound water): a water intrusion that involves a significant amount of water and absorption into low porosity materials (e.g., hard surface flooring, plaster, concrete) or assemblies (e.g., gym floors, structural cavities, multiple layers of gypsum wallboard) that have a low rate of evaporation due to deeply held or bound water. Drying may require special methods, longer drying times, or substantial vapor pressure differentials.

Other factors can impact the drying environment. Restorers should understand and consider these factors when estimating the drying capacity needed to prevent additional damages and begin the drying process. These factors include:

- Influence of heating, ventilating, and air conditioning (HVAC) systems
- Build-out density of the affected area
- Building construction complexity
- Influence of outdoor weather

STEP 3: Determine the proper division factor.

The division factor is determined by the class of water damage and the type of dehumidifier used.

Initial Dehumidification Factors for Simple Calculation - IICRC

TYPE OF DEHUMIDIFIER	CLASS 1	CLASS 2	CLASS 3	CLASS 4
CONVENTIONAL REFRIGERANT	100	40	30	N/A
LOW GRAIN REFRIGERANT (LGR)	100	50	40	40
DESICCANT	1 ACH	2 ACH	3 ACH	3 ACH

Initial Dehumidification Factors for Simple Calculation - Chuck Dewald Structural Drying Academy

TYPE OF DEHUMIDIFIER	CLASS 1	CLASS 2	CLASS 3	CLASS 4
LOW GRAIN REFRIGERANT (LGR)	70	40	30	70
DESICCANT	2 ACH	4 ACH	5 ACH	2 ACH

STEP 4: Determine pints of dehumidification needed per day.

Pints needed per day =

Cubic Feet of Affected Area (from Step 1)

Division Factor (from Step 3)

STEP 5: Determine dehumidifier's rated performance at 80°F/60%RH.

Use the Dehumidifier chart to the right to determine performance.

STEP 6: Determine number of dehumidifiers required.

Number of dehumidifiers required =

Pints of Dehumidification Needed Per Day (from Step 4)

Dehumidifiers Rated Performance at 80°F/60%RH (from Step 5)

DEHUMIDIFIER	PINTS/DAY @ 80F/60%RH
Phoenix DryMAX BLE	80
Phoenix R175	92
Phoenix DryMAX XL	125
Phoenix D385	130
Phoenix R250	135
Phoenix DryMAX XL Pro	140
Phoenix 250 MAX	145

LGR DEHUMIDIFIERS

► DryMAX BLE

55% MERV-10 Filter*	4037046
10" Round Lay-Flat Duct, 250'	4024935
10" Duct Ring	4037048

► DryMAX XL

55% MERV-10 Filter*	4038558
10" Round Lay-Flat Duct, 250'	4024935
14" Round Lay-Flat Duct, 250'	4024936
12" Intake Flex Duct, 25'	4024750
10" Dual Duct Ring	4029853
14" Single Duct Ring	4029854

► DryMAX XL Pro

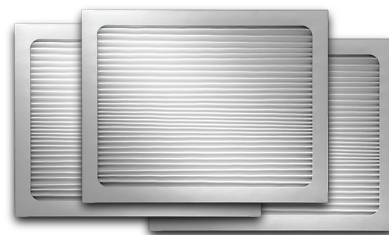
55% MERV-10 Filter*	4038558
14" Round Lay-Flat Duct, 250'	4024936

► R250

65% MERV-11 Filter* (Standard)	4025568
30% MERV-8 Filter*	4026315
10" Round Lay-Flat Duct, 250'	4024935
10" Duct Ring	4026309-01
12" Intake Flex Duct, 25'	4024750

► 250 MAX (STAINLESS SERIES)

65% MERV-11 Filter*	4021475
35% MERV-8 Filter*	4024969
10" Round Lay-Flat Duct, 250'	4024935
12" Intake/Exhaust Flex Duct, 25'	4024750
Wire Duct Ring	4028593-01



DESICCANT DEHUMIDIFIERS

► D385

React Filter MERV-7*	4026315
Process Filter MERV-11*	4021475
6" React Intake/Exhaust Flex Duct, 25'	4026859
10" Round Lay-Flat Duct, 250'	4024935

ELECTRIC HEAT DRYING SYSTEM

► FireBird Compact 20

MERV-13 Filter*	4037724
8" Inlet Duct Flange Kit	4033895
4 Cord Kit, 120V	4032773
8" Inlet/Outlet Flex Duct	4027415

AIR MOVERS & SCRUBBERS

► Guardian R

HEPA Filter, 2.5" x 18" x 18"	4031864
Pleated Pre-Filter*, 1" x 18" x 18"	4031877
Carbon/Potassium Filter, 3.5 lbs.	4031878
16" Intake Flex Duct, 25'	4028357
10" Round Lay-Flat Duct, 250'	4024935



*Available as single filter or 12-pack filters.





USEPHOENIX.COM | 800-533-7533